

PISO 1
FLOOR 1

PISO 2
FLOOR 2

E^{TO} H^{TO}

41.62

ÁREA TOTAL
TOTAL AREA

38.50

ABP
GPA

3.12

ÁREA EXTERIOR
EXTERIOR AREA

1. ENTRADA *HALL*

3.48

2. ESTÚDIO *STUDIO*

19.74

3. I.S. *BATHROOM*

5.22

5. LAVANDARIA *LAUNDRY*

1.55

6. VARANDA *BALCONY*

3.12

JARDIM COMUM COM PISCINA *COMMON GARDEN WITH SWIMMING POOL*

46.05

Unidades em m² All units in sq.m

GOMES

PISO
FLOOR

5

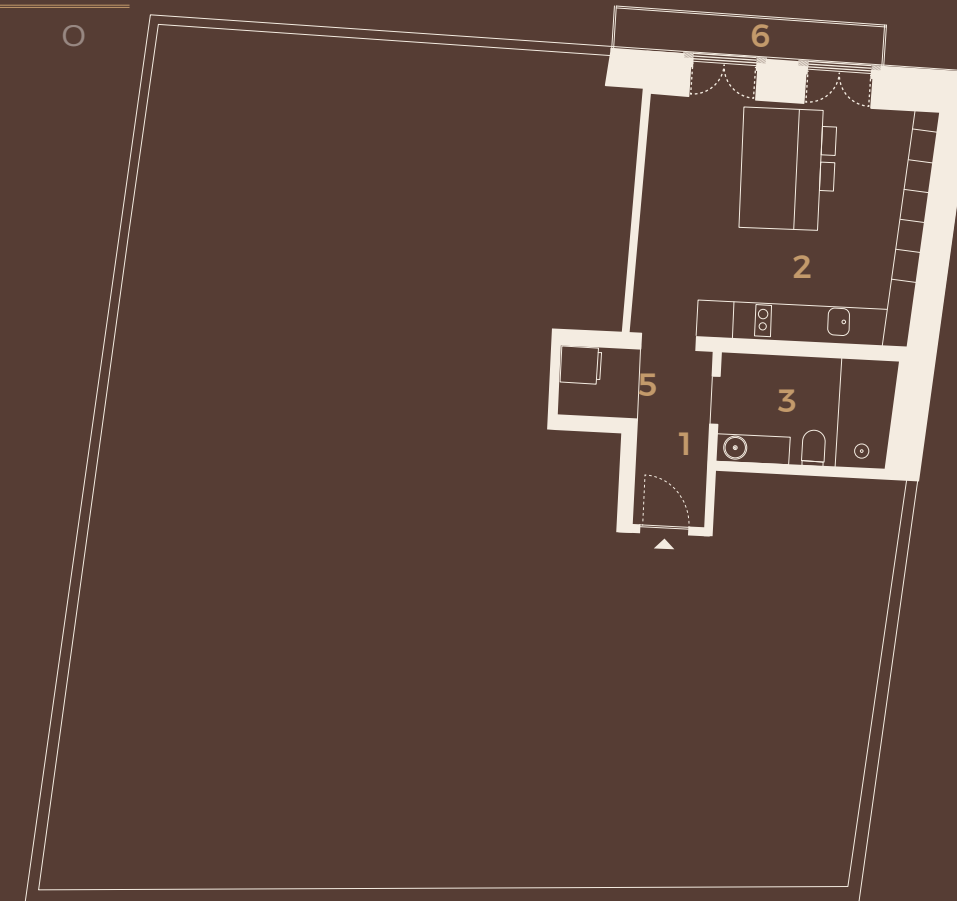
4

3

2

1

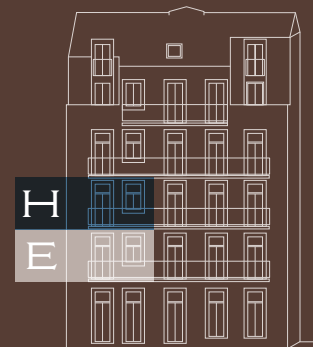
0



FACHADA PRINCIPAL
MAIN FACADE



FACHADA TARDOZ
REAR FACADE



RUA GOMES FREIRE

CAMPO MÁRTIRES DA PÁTRIA